

2002 Pocket Door Lock / Pull (#2002CPDL)



Various backsets to meet your requirements

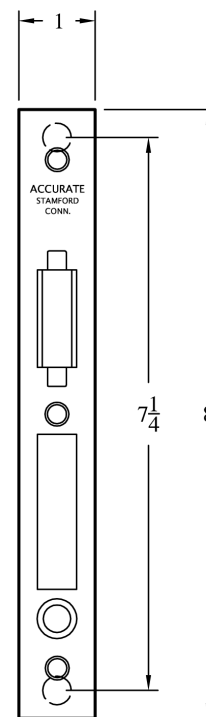
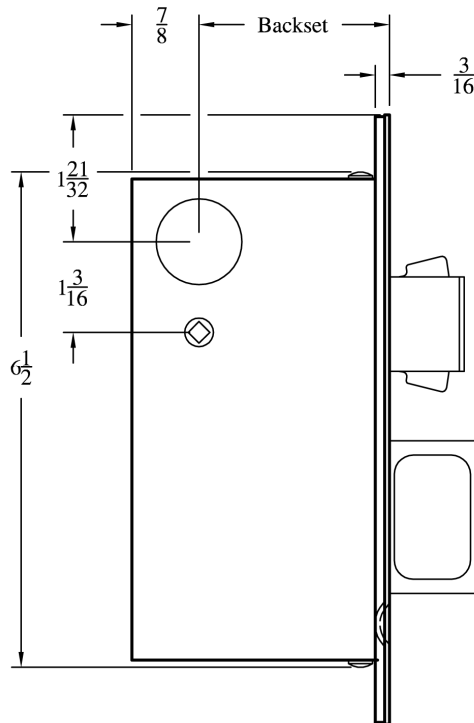
Please specify
2 1/2", 2 3/4", 3 3/4", 5", or 6" Backset
Custom narrow and large backsets also available

Operation*:
2002 CPDL-1 By Key Outside Only
2002 CPDL-2 By Key Outside and Inside
2002 CPDL-3 By Key Outside, Thumb turn Inside
2002 CPDL-4 By Thumb turn Inside Only
2002 CPDL-5 By Thumb turn Inside, Emergency key Outside

**Numbers are for specification and door preparation purposes. The lock itself is the same for all operations.*



CASE:
Heavy Gauge, Wrought (11/16" thick)
DEAD BOLT:
1/2" thick, 1 7/32" high, 1" Throw
PULL:
1/2" thick, 2" high, 1 1/4" throw
THUMB TURN HUB:
3/16" (5mm) on the diamond
STRIKE:
Single doors: 3 1/2" x 1" (dust box available)
Double doors: refer to #2002CPDS
ARMOR FRONT:
Brass, bronze or stainless steel.
CYLINDER:
Available to order (3/4", 1", 1 1/8" length in limited Keyways) - Please contact one of our Sales Engineers for Details



SUGGESTED TRIM:	CPDL-1	CPDL-2	CPDL-3	CPDL-4	CPDL-5
Inside	Optional: A2002B, O2002B, N2002B, S2002B	A2002C, O2002C, N2002C, S2002C	A2002T, O2002T, N2002T, S2002T	A2002T, O2002T, N2002T, S2002T	A2002T, O2002T, N2002T, S2002T
Outside	A2002C, O2002C, N2002C, S2002C	A2002C, O2002C, N2002C, S2002C	A2002C, O2002C, N2002C, S2002C	Optional: A2002B, O2002B, N2002B, S2002B	A2002E, O2002E, N2002E, S2002E

In addition to the above flush pulls (also available with concealed screws), please refer to our 24R and 24S flush cups for more trim options.